



NORTHFIELD RETIREMENT COMMUNITY

NRC Golf

Classic



The First Annual NRC Golf Classic, held on August 23 at Summit Golf, could be described as nothing less than a huge success. Even though we battled rain and an occasional downpour for part of the day, everyone had a great time. As one golfer stated, "The course was challenging and the food was absolutely fabulous. What more could one ask for?"

Without our major sponsors and other corporate affiliations, we would never have achieved the success we had. Northfield Retirement Community would like to thank our two major food sponsors, New Horizon Foods and US Food Service, as well as Brockwood Farms, Hormel, Pepsico/Lay's, Bush's Beans, Mrs. Gerry's Salads, Franklin Street Bakery, Fishery Products International, Simplot, Unilever and Menu Inspirations.

Thrivent Financial-North Rice County Chapter also deserves a huge thank you for their matching grant supporting this event.

Prize sponsors included: Coca-Cola Bottling, Northfield YMCA, Target Corporation, Pepsi Cola Bottling, Aramark, LifeTrail Systems, Jerry Kipp, P. Hanson Marketing, Valic Financial Advisors, Jim Leonard-McKesson, Furlong Motors, Marian



Care Center Resident Council and Polzin Glass.

Finally, our thank you list wouldn't be complete without a gracious nod to our corporate hole sponsors: First National Bank-Northfield, Guth Electric-Northfield, Hanratty & Associates-Plymouth, KMW Landscape Design-Edina, LarsonAllen-Austin, PayCom Business Services-Red Wing, Pinc Financial Dimensions, LLC, Piper Jaffray, Red Wing Construction, Schmidt Goodman Office Products-Rochester, The Garland Company Inc., Horizon Agency Inc.-Eden Prairie, Pathway Health Services, Rehab Care Group, Hygenic Service Systems, New Horizon Foods, Community Resource Bank-Northfield, DALCO, Sylvander Heating-Red Wing, Ryan Mechanical-Red Wing, Trossen Wright Plutowski Architects PA-Minneapolis and Herzog Swenson-Owatonna.

The goals set forth by the Northfield Retirement Community Foundation remain strong in securing the funding necessary to endow our full-time chaplain position into the future. As we plan for next year's golf tournament, we will keep in mind the mission to make the NRC Golf Classic an annual event, where we can share in the camaraderie and fellowship of our friends and business associates in pursuit of supporting a wonderful cause.

Remodeling Near Completion

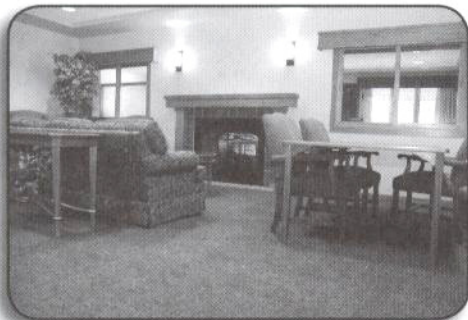
The end is in sight for the remodeling project at Northfield Retirement Community. The residents and staff are excited for the new opportunities.

Movie nights will now be commonplace for the residents, as they enjoy the stadium-seating

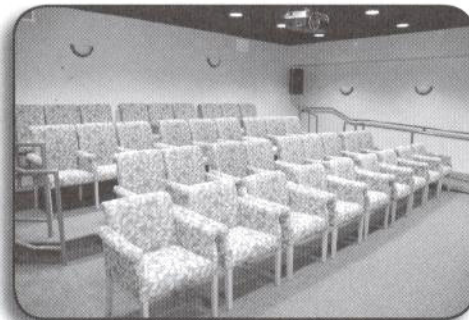
education and entertainment theater. With this addition, residents are looking forward to movie nights and special occasions for dinner and a movie.

The Fountain Fitness Center will provide complete fitness and wellness programs. NRC is

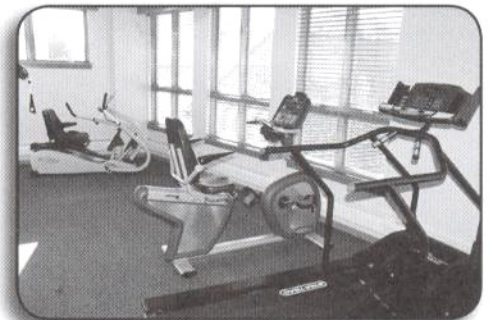
working in conjunction with the YMCA to make sure individuals are properly trained on the use of all the equipment for the best results possible. In the vein of complete physical fitness, the LifeTrail system on the outdoor walking path around the NRC campus is



People are always looking for a comfortable, quiet location to relax, visit or read a book. The fireside lounge is a great place to hibernate.

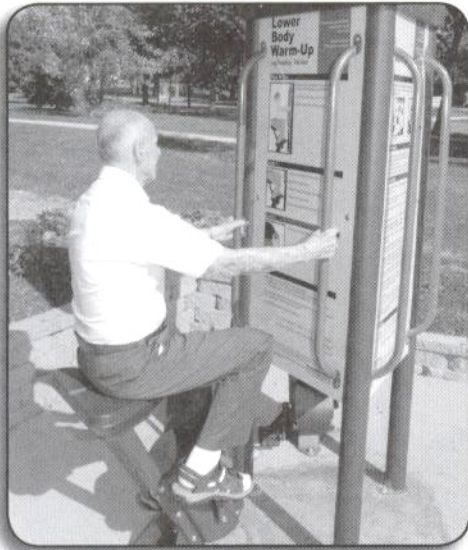


The education and entertainment theatre with beautiful décor and comfortable seating is already proven to be a popular location for the residents.



The Fountain Fitness Center is going to be a popular place once the winter weather sets in and it becomes too cold to exercise outside.

completed. It is open to all of our residents, as well as the people of Northfield. We encourage our neighbors to stop by and try out LifeTrail. There are instruction panels at each station, so you can get a healthy, complete workout and still enjoy the fresh air.

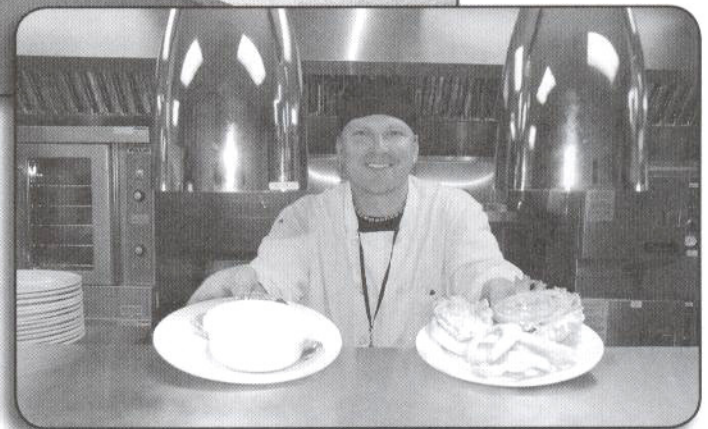


Resident Deane Richardson didn't waste any time to get out on the NRC walking path to try out the new LifeTrail outdoor fitness system.



Left: In addition to the café, the buffet dining will always be a great dining alternative.

Right: Come and let Chef Mark prepare a wonderful meal for you at our café. It's a great place to visit with friends.



Café-style and buffet dining is another new development on our campus. Order off the complete menu, or have a quick snack to go. The residents have already fallen in love with the café, and it is

quite busy during mealtime.

We encourage visitors to stop by and take a look at the new offerings, or you can call ahead to schedule a tour. We'd love to show off our new surroundings.

Continuum of Care

Evergreen Lodge is the name of the newest facility on the campus of Northfield Retirement Community. This will be a twelve-unit Memory Care facility. NRC is very excited about this added amenity to our campus that will complete the continuum of care.

Evergreen Lodge will have a beautiful dining room, family room,

sunroom and private study. All meals will be prepared on site and served family style. The residents who live there will have private rooms and access to an enclosed walking path through a tranquil garden setting.

Construction is moving along well, in spite of the recent wet



weather. The construction crews believe they are still on schedule for mid-November occupancy.

For families looking for this option in their life, you may contact Lois Burgoyne of Northfield Retirement Community at 507-664-3466. Space at Evergreen Lodge can be reserved by putting your name on the waiting list. Private pay, as well as county assistance, will be accepted.

NRC is extremely enthusiastic to be able to provide another significant option of care for families to consider for their loved ones.



Kildahl Park Pointe, the Cooperative housing building currently under construction on the Campus of Northfield Retirement Community, is making great progress.

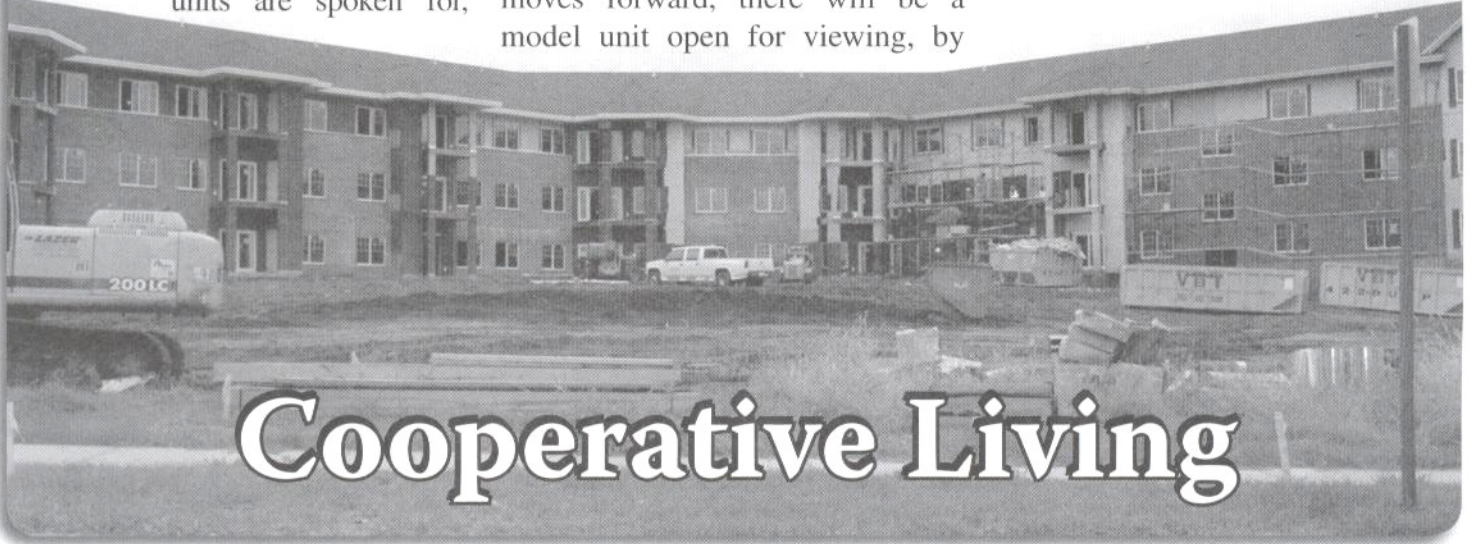
To date, sixty percent of the units are spoken for,

which leaves a terrific choice of units available. Interest is running very high, as friends are telling friends about the Co-op.

Sheetrock is current being installed. The brick exterior is also near completion. As construction moves forward, there will be a model unit open for viewing, by

appointment, in early November.

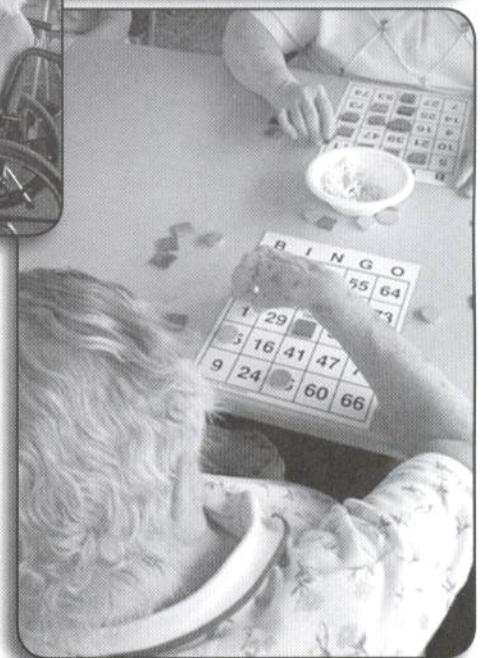
You can visit the information center at 516 South Water Street, Suite 100, near Just Foods in downtown Northfield, or give them a call at 507-650-7100. The website is www.kildahlparkpointe.com.



Cooperative Living

A Day at Our Fair

Fair Day on the campus of Northfield Retirement Community is one of the days of summer that our residents and family members eagerly anticipate. It is a great opportunity to enjoy a beautiful day outdoors, while enjoying games and great food. "Each year, we provide fun food that people enjoy. In addition, there is always a hot game of bingo going on. We also have to thank some of our wonderful friends for bringing old vintage cars and trucks. They always seem to bring back a lot of great memories, and the men who live here enjoy talking shop with the car owners. Small farm animals are always popular, too, with rabbits, donkeys, sheep and calves making an appearance," said Milosha Malecha, activities director at the Northfield Care Center. Fair Day is also a great



chance for staff to have some fun with the residents in a setting outside the building. "We were thankful for the weather we had this year. There were plenty of smiles to go around."



NORTHFIELD RETIREMENT COMMUNITY